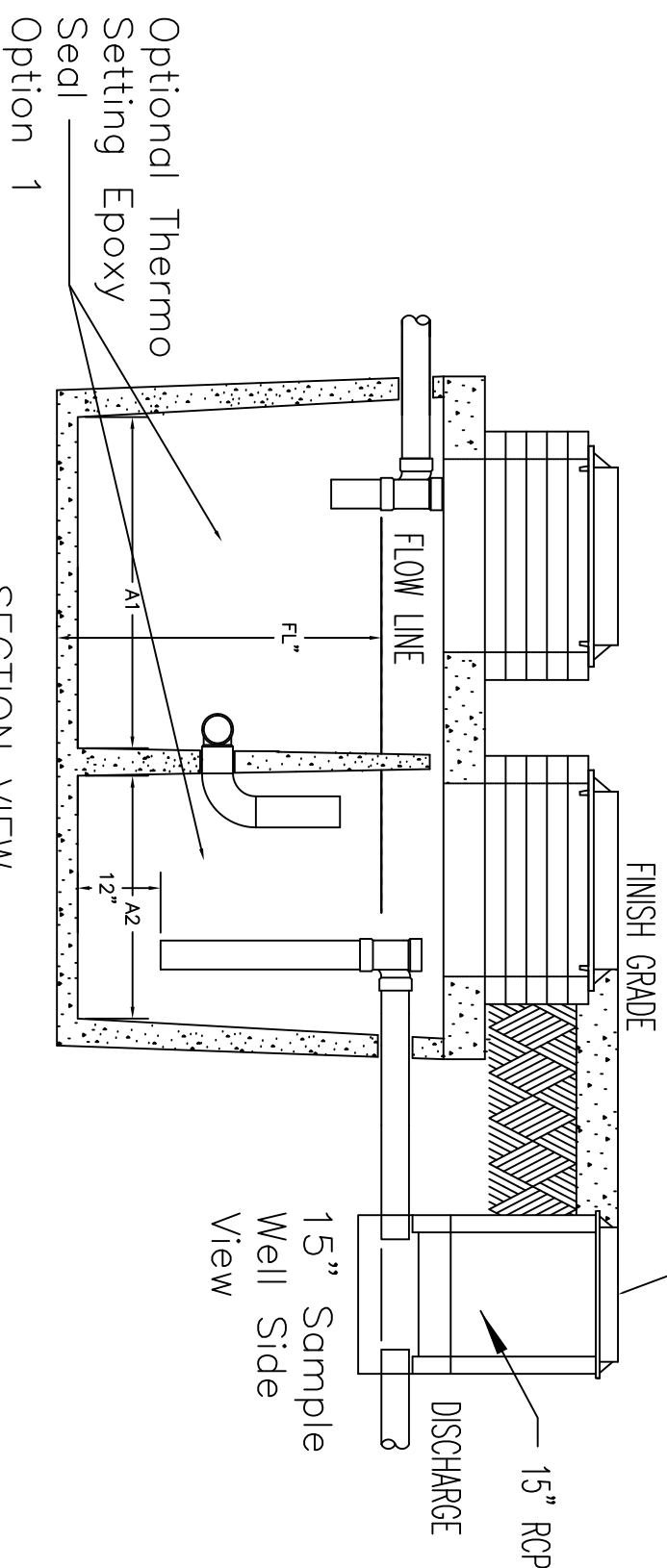


PLAN VIEW

VULCAN MODEL 1418 RING AND COVER
BOLT DOWN OPTIONAL WOULD BE V2328

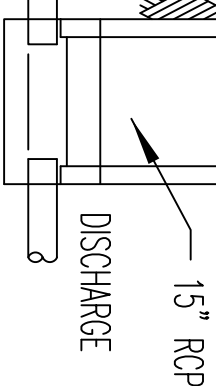
VULCAN V-1610-2 CL
RING AND COVER



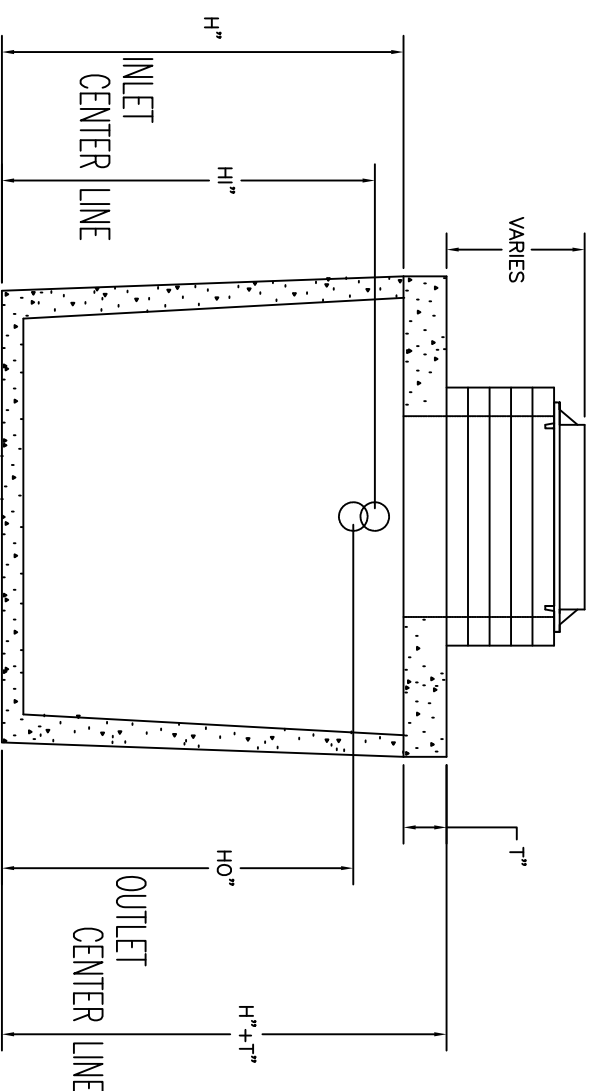
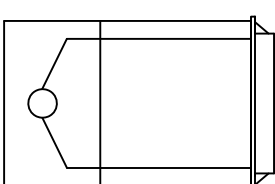
SECTION VIEW

Optional Thermo
Setting Epoxy
Seal
Option 1

15" Sample
Well Side
View



15" Sample
Well End
View



- GENERAL NOTES:
1. ALL CONCRETE SHALL HAVE A MIX DESIGN OF 5000 PSI WITH A MINIMUM OF 5 SACKS OF STANDARD TYPE 1 CEMENT.
 2. ALL REINFORCING BARS SHALL BE CLEAN, NEW AND FREE OF DIRT, RUST, OR OIL AND SHALL MEET OR EXCEED THE REQUIREMENTS OF ASTM A-615M, GRADE 60.
 3. WEIDED WIRE FABRIC SHALL BE CLEAN, NEW AND FREE OF DIRT, RUST, OR OIL AND SHALL MEET OR EXCEED THE REQUIREMENTS OF ASTM A-185.
 4. LAP REBARS AT ALL SPLICES A MINIMUM OF 36 BAR DIAMETERS.
 5. ALL REINFORCING SHALL BE SET AND TIED, ALL CONCRETE SHALL BE PLACED, FINISHED, AND CURED PER ACI 318-83 SPECIFICATIONS AND PER ALL SAFETY PROVISIONS OF OSHA.
 6. WALL AND BTM. REINFORCING SHALL BE W4 X W4-4X4 WITH NO.3 HOOK BENT 90 DEG WITH AN 18" TAIL EACH PLACED 12" APART FOR ADDITIONAL WALL TO FLOOR CONNECTION STRENGTH.
 7. TOP REINFORCING SHALL BE NO. 4 BAR ON 8" CENTER TO CENTER SPACED 2" FROM BTM SURFACE OR EQUAL.
 8. Manufacture reserves the right to make changes whenever necessary.
 9. Please excavate an additional foot around tank for installation.

Septic Tank Size (Gallons)	L(in)	H(in)	W(in)	Hl(in)	HO(in)	T(in)	A1(in)	A2(in)	Flowline Height (in)	Weight Without Lid (lb)	Weight with Lid (lb)
500	68	56	52	51	48	6	28	28	46	5400	6800
750	78	56	68	52	49	6	36	27	47	7800	10000
1000	100	56	68	52	49	6	48	35	47	9600	13000
1250	150	46	68	42	39	6	88	45	37	11500	16500
1500	150	56	68	52	49	6	88	45	47	13300	18400

A1 AND A2 DIMENSIONS ONLY FOR TWO COMPARTMENT TANKS
*Contact for other sizes

Optional Hycrete admix to lower abortion rate of concrete to approximately 1%.
Option 2